

STUDY LOCAL

GO FURTHER

Part Time
Courses 2023-24
www.cymedd.ac.uk

CAMPUSES IN ABERDARE,
NANTGARW, RHONDDA,
YSTRAD MYNACH



WELCOME TO CYC

OUR MISSION IS YOUR FUTURE SUCCESS



**Jonathan Morgan,
Principal and CEO**

I am very pleased that you are thinking about coming to study with us. Whether your circumstances have changed or you simply want to change direction, Coleg y Cymoedd can meet your skill development, learning, training or retraining needs – we are here to help you.

We have a range of courses specifically designed to meet the study needs of our adult learners and they enable you to study across a variety of areas, at a level and pace that suits you.

We hope you will find this course guide useful. You can also come and visit one of our open events, check out our social media and learner testimonials or contact us to arrange a visit. Our website also provides you with even more information to help you make your choice. Check it out at www.cymoedd.ac.uk

I wish you good luck with your search and if you are inspired to join us in September, I look forward to welcoming you to the college.



HOW TO APPLY

Throughout the process you will be able to monitor your application's progress using your online application account or via the Coleg y Cymoedd app.

Step 1 SEARCH

Search for a course in this guide or online at www.cymoedd.ac.uk

Step 2 APPLY

You can apply for the course of your choice from November 2022 via the college website at www.cymoedd.ac.uk

Step 3 CONSULTATION/OFFER SESSION

You will be invited to a consultation/offer session with a member of our teaching staff. During the guidance consultation, you will discuss your choices and receive advice on the best course for you and discuss additional learning needs and support available.

Step 4 AFTER THE INTERVIEW

After the consultation, you will either be offered a place or referred to a more appropriate one.

Step 5 ENROLMENT

An invitation and enrolment pack will be sent out during August 2023 giving you all the information you will need to enrol onto your course.



OPEN EVENTS

Our Open Events are a great way to find out more about our courses and the career you want.

Our expert staff are available and able to answer any questions you may have.

Check out our website for dates and times www.cymoedd.ac.uk/open



Advice and guidance is available throughout the year, use our contact details to get in touch.

CROESAWN ALWADAU

YN Y GYMRAEG



WE WELCOME CALLS

IN WELSH

CONTENTS

STUDENT INFORMATION

HOW TO APPLY	3
FEES	6
LEARNER SUPPORT	8
HIGHER EDUCATION	9
WELSH AT THE COLLEGE	10
FUTURES @ CYMOEDD	11

COURSES

APPRENTICESHIPS & WORK BASED LEARNING	14
BUSINESS, FINANCE & MANAGEMENT	18
CHILDCARE / HEALTH	20
CONSTRUCTION	24
HOSPITALITY & CATERING	28
HUMAN RESOURCES & EDUCATION	30
ENGINEERING & ELECTRONICS	32
ESOL - ENGLISH FOR SPEAKERS OF OTHER LANGUAGES	34
GCSEs	35



FIRST AID & SAFETY	36
HAIRDRESSING & BEAUTY THERAPY	38
SPORT	40
SIGN LANGUAGE / DEAF AWARENESS	42
AIR CABIN	44
VOCATIONAL ACCESS	45
WELSH FOR ADULTS	46
CONFERENCING & EVENTS	48
BUSINESS & INTERNATIONAL SERVICES	49



FEES

Fee Information for Part Time Further Education Courses*

PAYMENT OF TUITION FEES

Payment of tuition fees may be paid by cash, cheque or debit/credit card. Please note we are not able to process contactless payments.

PAYING BY INSTALMENTS

For total course costs exceeding £200, payment can be arranged up to three instalments.

EXAM / COURSE REGISTRATION / MATERIALS FEES

Course registration and exam fees will need to be paid at enrolment. Some courses, such as Construction and Engineering will charge for costs of materials, which will also be payable at enrolment.



ABERDARE



Wellington Street, Aberdare, Rhondda Cynon Taf, CF44 8EN
01685 887500

NANTGARW



Heol y Coleg, Parc Nantgarw, Cardiff, CF15 7QY
01443 662800

EMPLOYER

If your Employer is paying for your fees, you will need a letter from the employer confirming that they are agreeing to pay fees on letter headed paper with a purchase order number.

* Fees listed here do not apply to Higher Education, Cost Recovery, Franchised, International or Commercial Courses.

Coleg y Cymoedd takes every effort to ensure the information in this publication is accurate at the time of printing. Coleg y Cymoedd reserves the right to make changes or withdraw without notice any of the courses, course facilities or support described. The website www.cymoedd.ac.uk will always contain the most up to date information.

FEE REDUCTION

If you are in receipt of benefits, you may be entitled to a reduction in your course fees. You will need to bring valid proof of your entitlements, along with a recent bank statement to verify the current payments. If you are a learner at university, you will need proof of your confirmation of offer/enrolment.

TYPE OF BENEFIT

Income-based Job Seekers Allowance

Income Support

Employment & Support Allowance

Working Tax Credit with or without NHS Exemption

Universal Credit

Child Tax Credit (this is different to Child Benefit)

Severe Disablement Allowance

Persons under 19 as at 1st September 2022

Pension Credit

Full Time University Learner studying GCSE Maths & English Only

Refugees or asylum seekers in receipt or the equivalent of income-based benefit and their dependents

Reduction in your course fees of £15.00 when you are in receipt of any of the benefits listed.

Disability Living Allowance/Personal Independence Payment (PIP) alone and Child Benefit is not eligible for a Fee Reduction.

RHONDDA



Llwynypia, Tonypany, Rhondda Cynon Taf, CF40 2TQ
01443 663202

YSTRAD MYNACH



Twyn Road, Ystrad Mynach, Hengoed, CF82 7XR
01443 816888



Get Connected
Coleg y Cymoedd



LEARNER SUPPORT

The Learner Services team, based on each campus, provide day to day help and support with applications, travel and grants, and is your first point of contact if you are not sure who to approach.

Additional Learning Support

Our robust Universal Learning Provision is likely to meet the needs of most learners, but some learners may require access to our Additional Learning Provision. If you have a disability, sensory impairment or learning need such as dyslexia, dyspraxia, ADHD or ASD; had a Statement (SEN), IDP or support plan in school and think you need extra help in college, then please let us know.

You can tell us on your application form, speak to someone from the support team at your interview, or ask someone to contact you. Telling us as early as possible helps make sure the right support for you is in place.

Our friendly, experienced and qualified Additional Learning Provision team are able to meet a range of individual needs. Learning Support Assistants provide close support and work with small groups in and out of class.

Specialist assessors arrange access arrangements in exams and provide specific support. Learning Coaches provide extra support for attendance and help make settling into college easier.

For further information about Additional Learning Support please visit:

**www.cymoedd.ac.uk/learningsupport
and www.alnpathfinder.wales**



Find out about
learner support:

We understand that college is not just about taking a course - it is about preparing for work or further study, meeting new people and enjoying what you do, and you can be confident that support is available.

Looked After or Care Leaver

If you have been in or are leaving care, we offer extra support with all aspects of college life and help you prepare for further study or work. We provide a link person for you to speak to, as and when you need to, who can offer advice and guidance, including financial support. Let us know at application or speak with Campus & Learner Services.

Young Carers

The Learner Services team can also help if you have caring responsibilities for a family member and are worried it might impact on your college work. Talk to us about your circumstances, and we'll let you know what help and support you can get.

Student Welfare and Wellbeing

If you're experiencing personal difficulties including housing and relationship issues, you can contact our Student Welfare and Wellbeing Officers. They can provide you with confidential support or refer you to other professionals if necessary.



HIGHER EDUCATION

UNIVERSITY COURSES AT COLEG Y CYMOEDD

Coleg y Cymoedd provides higher education courses with our collaborative partner, the University of South Wales. This means you'll graduate with a university qualification, but study in a location convenient for you.

Courses supported by the University are identified throughout this guide.



HIGHER EDUCATION FINANCIAL INFORMATION

Part time Higher Education learners may be able to receive help with fees via the HE fee waiver scheme or Student Loan System. Ask for details by telephone on 01443 662800.

For financial information for Higher Education and details of support available including Disabled Students' Allowance (DSA) please visit our website.

SUPPORT FOR HIGHER EDUCATION LEARNERS

Specialist staff are here to discuss your individual support needs or concerns in confidence and help you access the support you require on your Higher Education course at Coleg y Cymoedd.

If you have a long-term disability, mental health condition (for example, depression or anxiety) or specific learning difficulty (for example, dyslexia, dyspraxia, ADHD, Asperger's or ASD), which has a substantial impact on your educational needs, you may be eligible for extra help in the form of Disabled Students' Allowance (DSA). You can apply for DSA as soon as you have decided on the Higher Education course you wish to study. We encourage learners to apply for DSA as early as possible.

To find out more, ask at Learner Services or contact Natalie Boughton-Lawrence, Deputy Head of ALP and ALS Co, by email **Natalie.Boughton-Lawrence@cymoedd.ac.uk**



WELSH AT THE COLLEGE

The Welsh language and culture is important to us at Coleg y Cymoedd. Being able to speak Welsh is increasingly being seen as a valuable skill to have in the workplace, so let us help you make the most of whatever Welsh skills you may have. Also, under the Welsh Language Standards, you are entitled to services and support through the medium of Welsh.

Opportunities to study through the medium of Welsh or bilingually (subject to viable numbers):

- New bilingual provision in Childcare; Health and Social Care; Public Services; Sport; Creative Industries; Business
- A Welsh-medium Maths, GCSE resit class
- Bilingual Welsh Baccalaureate groups (at AS and A-Level)
- A-Level and AS-Level in Welsh (Second Language)
- Welsh-medium Customer Care units called 'Cymraeg Gwaith' across all vocational areas
- Submit assessments in Welsh and receive certificates in Welsh (with the approval of the awarding body)

If you have any enquiries related to the Welsh language at the College, contact Lois Roberts:
lois.roberts@cymoedd.ac.uk 01443 810127.

Also visit our Welsh Language page on our website:
www.cymoedd.ac.uk/learner-support/welsh-language/



Help and Support

We offer the following to help you maintain or improve your Welsh language skills:

- Bilingual resources related to subject areas
- An activity club for Welsh speakers: 'Clwb Cymraeg y Cymoedd'
- Opportunities to learn Welsh in College
- Signposting to Welsh classes in your community
- A calendar of Welsh language and Welsh-themed events throughout the year
- An opportunity for Welsh speakers to be employed as Coleg Cymraeg Cenedlaethol Welsh Ambassadors



FUTURES @CYMOEDD



Your future is important to us!

Our dedicated Futures team at Coleg y Cymoedd are able to support learners with:

- UCAS applications
- Self-employment
- Employment: part-time and full-time jobs
- Apprenticeships
- Employability skills



COURSES

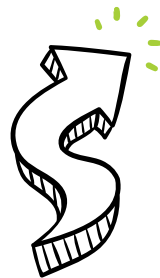


APPRENTICESHIPS & WORK BASED LEARNING

If you are employed or self-employed, an apprenticeship could be for you. You will receive top quality training, develop your skills, and gain qualifications on the job.

As an employee you will earn a wage and work alongside experienced staff to gain job specific skills. You will undertake training towards a nationally recognised qualification. Apprenticeships are open to all ages subject to specific criteria.

On applying for an apprenticeship, you will be invited along to meet one of our assessors and discuss what is involved in an apprenticeship. You will also be required to undertake an initial assessment in literacy and numeracy to establish any support required.



**Find out
more about
the course:**



Foundation Apprenticeship (Level 2)

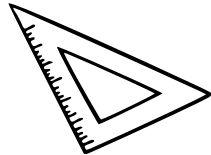
You will work towards a QCF-NVQ Certificate Level 2 in your chosen vocational area together with a Technical Certificate and Essential Skills Wales in Application of Number, Communication and Digital Literacy. You will receive off the job training which may include attendance at college. You will be assigned a Work Based Assessor who will visit you in your workplace and monitor your progress. On completion, you will have the opportunity to progress to a Level 3 apprenticeship.

Advanced Apprenticeship (Level 3)

You will work towards a QCF-NVQ Diploma Level 3 in your chosen vocational area together with a Technical Certificate, Essential Skills Wales in Application of Number, Communication and Digital Literacy. You will be assigned a Work Based Assessor who will visit you in your workplace and monitor your progress. After completing the apprenticeship at Level 3, you could move onto a Higher Apprenticeship or a Higher Education course at university or at Coleg y Cymoedd.

Higher Apprenticeships (Level 4/5)

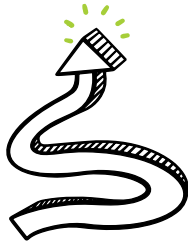
The Higher Apprenticeship is a work-based programme for employed people working in management or senior positions. This programme provides opportunities to achieve qualifications at Levels 4 and 5. The Higher Apprenticeship provides funded training that is specific to the industry sector, alongside Essential Skills Wales and a Technical Certificate.



WORK BASED LEARNING
AND APPRENTICESHIPS

APPRENTICESHIP
PATHWAYS INCLUDE

- | | |
|-----------------------------------|--------------------------------------|
| ✓ Accountancy | ✓ Management |
| ✓ Brickwork | ✓ Painting & Decorating |
| ✓ Business Administration | ✓ Plant Operations |
| ✓ Business Improvement Techniques | ✓ Plastering |
| ✓ Carpentry | ✓ Play Work |
| ✓ Civil Engineering | ✓ Plumbing |
| ✓ Customer Service | ✓ Rail Engineering / Electrification |
| ✓ Early Years / CCLD | ✓ Science |
| ✓ Electrical | ✓ Surveying |
| ✓ Engineering | ✓ Teaching Assistants |
| ✓ Fire & Security Systems | ✓ Team Leading |
| ✓ Health & Social Care | ✓ Train Driving |
| ✓ Hospitality & Catering | ✓ Sustainable Waste Management |
| ✓ Interior Systems | ✓ CIPD |



Pathways available in Foundation, Advanced or Higher Apprenticeships (not available on all areas), for more information about any of our apprenticeships visit our website www.cymoedd.ac.uk, or call the School of Work Based Learning on 01443 810029 / 663162 or email workbasedlearning@cymoedd.ac.uk

BUSINESS, FINANCE & MANAGEMENT

ABERDARE / NANTGARW / YSTRAD MYNACH

Level 2 Certificate in Accounting

Mode E

Level 3 Diploma in Accounting

Mode E

NANTGARW / YSTRAD MYNACH

Foundation Degree in
Business Management

Offered with University of South Wales

Mode E

YSTRAD MYNACH

Level 2 Certificate in Accounting

Mode D

Level 3 Diploma in Accounting

Mode D

D: Day / E: Evening



Find out
more about
the course:

BIS COURSES

ABERDARE / NANTGARW / RHONDDA / YSTRAD MYNACH

ILM Level 2 Award in Leadership and
Team Skills (3 days)

Mode D & E

ILM Level 3 Award in Leadership and
Management (2 days)

Mode D & E

ILM Level 5 Award in Leadership and
Management (2 days)

Mode D & E

ILM Level 7 Certificate/Diploma in
Leadership and Management

Mode D & E

Microsoft Office Specialist (MOS)

Mode D & E

NANTGARW / YSTRAD MYNACH

AAT Diploma in Accounting (Professional)
Level 4

Mode D & E

D: Day / E: Evening

A full list of our BIS courses can be found on our website:

www.cymoedd.ac.uk/employers/workforce-training-development/

For further information, a brochure or to book a course
please contact the BIS Team on 01443 663128 or
bis@cymoedd.ac.uk

CHILDCARE / HEALTH

ABERDARE / RHONDDA

Level 2 Counselling Skills

Mode E

NANTGARW / YSTRAD MYNACH

Level 2 Counselling Skills

Mode D

NANTGARW

Level 3 Counselling Skills

Mode D & E

Level 4 Diploma in Therapeutic Counselling

Mode E

YSTRAD MYNACH

Foundation Degree Education, Learning and Development
Offered with University of South Wales

Mode E

BA (Hons) in Education, Learning and Development (Top-Up)
Offered with University of South Wales

Mode E

Level 2 Supporting Teaching & Learning

Mode D

Level 3 Supporting Teaching & Learning in Schools

Mode D

D: Day / E: Evening



Find out
more about
the course:



CHILDCARE / HEALTH

BIS COURSES



**ABERDARE / NANTGARW /
RHONDDA / YSTRAD MYNACH**

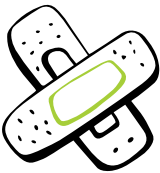
Qualsafe Paediatric First Aid **Mode D & E**

NANTGARW / YSTRAD MYNACH

Award in Transition to Play Work (from early years) **Mode D & E**

Level 4 Diploma in Therapeutic Counselling **Mode D**

D: Day / E: Evening



A full list of our BIS courses can be found on our website:
www.cymoedd.ac.uk/employers/workforce-training-development/

For further information, a brochure or to book a course please contact the BIS Team on 01443 663128 or bis@cymoedd.ac.uk



CONSTRUCTION

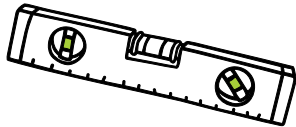
YSTRAD MYNACH

Level 1 Building Maintenance	Mode E
Level 1 Carpentry and Joinery	Mode E
Level 1 Plumbing	Mode E
Level 1 Electrical Installation	Mode E

NANTGARW

Level 3 Extended Certificate in Construction & the Built Environment	Mode E
Level 3 National Diploma in Construction & the Built Environment or Civil Engineering	Mode D
Level 3 Site Surveying and Setting Out	Mode D
Level 4 HNC Surveying Offered with University of South Wales	Mode E
Level 5 Foundation Degree in Sustainable Construction & Surveying Offered with University of South Wales	Mode D

D: Day / E: Evening



Find out
more about
the course:



CONSTRUCTION

SHORT COURSES

ABERDARE / NANTGARW / RHONDDA / YSTRAD MYNACH

Working at Heights Awareness	Mode D & E
Abrasive Wheels	Mode D & E
Level 3 Award in Requirements for Electrical Installations 18th Edition	Mode D & E
Site Supervisor Safety Training Scheme (SSSTS)	Mode D
Site Management Safety Training Scheme (SMSTS)	Mode D
Health & Safety Awareness Level 1	Mode D
Site Supervisor Safety Training Scheme (SSSTS) Refresher	Mode D
Site Management Safety Training Scheme (SMSTS) Refresher	Mode D

D: Day / E: Evening

A full list of our short courses can be found on our website:
www.cymoedd.ac.uk/en/employers/training-courses/

For further information, a brochure or to book a course please contact the BIS Team on 01443 663128 or
bis@cymoedd.ac.uk



GAS QUALIFICATIONS

SHORT COURSES

YSTRAD MYNACH

CCN1 – Core Domestic Gas Safety	Mode D & E
Energy Efficiency (Part L Compliance)	Mode D & E
Gas Foundation Training Course	Mode D & E
Unvented Domestic Hot Water Cylinders ACS Gas Assessments (Domestic)	Mode D & E
Combination Boiler Fault Finding	Mode D & E
CMDDA1	Mode D & E
CONGLP1-LPG Changeover	Mode D & E
Water Regulations	Mode D & E
CENWAT1	Mode D & E
CKR1	Mode D & E
HTR1	Mode D & E
MET	Mode D & E
DAH1	Mode D & E

D: Day / E: Evening

A full list of our short courses can be found on our website:
www.cymoedd.ac.uk/en/employers/training-courses/

For further information, a brochure or to book a course please contact the BIS Team on 01443 663128 or
bis@cymoedd.ac.uk

HOSPITALITY & CATERING

**ABERDARE / NANTGARW /
RHONDDA / YSTRAD MYNACH**

BIIAB Level 2 Award for Personal
Licence Holders

Mode D & E

Qualsafe Level 2 Food Safety in Catering

Mode D & E

Qualsafe Level 3 Supervising Food Safety

Mode D & E

D: Day / E: Evening



A full list of our short courses can be found on our website:
www.cymoedd.ac.uk/en/employers/training-courses/

For further information, a brochure or to book a course
please contact the BIS Team on 01443 663128 or
bis@cymoedd.ac.uk



**Find out
more about
the course:**

HUMAN RESOURCES & EDUCATION

YSTRAD MYNACH

Professional Graduate Certificate
Post-Compulsory Education and Training
Offered with University of South Wales **Mode D**

Professional Certificate Post-Compulsory
Education and Training
Offered with University of South Wales **Mode D**

NANTGARW

Professional Graduate Certificate
Post-Compulsory Education and Training
Offered with University of South Wales **Mode E**

Professional Certificate Post-Compulsory
Education and Training
Offered with University of South Wales **Mode E**

D: Day / E: Evening



Find out
more about
the course:



BIS COURSES

ABERDARE / NANTGARW /

RHONDDA / YSTRAD MYNACH

City and Guilds Level 3 Award in Education and Training	Mode D
Training, Assessment and Quality Assurance (TAQA)	Mode D & E
Internal Verification Award (IQA)	Mode D & E
ILM Level 3 Coaching and Mentoring	Mode D
CIPD Level 3 Foundation Certificate in People Practice	Mode D & E
CIPD Level 5 Associate Diploma in People Management	Mode D & E
CIPD Level 5 Associate Diploma in Organisation Learning and Development	Mode D & E

D: Day / E: Evening

A full list of our BIS courses can be found on our website:
www.cymoedd.ac.uk/employers/workforce-training-development/

For further information, a brochure or to book a course please contact the BIS Team on 01443 663128 or bis@cymoedd.ac.uk

ENGINEERING & ELECTRONICS

NANTGARW

Level 1 Certificate in Electronics	Mode D
Level 1 Computer Aided Design Parametric Modelling	Mode E
Level 2 Computer Aided Design Parametric Modelling	Mode E
Level 3 Award in Extended Certificate in Engineering (Mechanical)	Mode D
Level 3 Award in Extended Certificate in Engineering (Electronics)	Mode D
Level 3 Diploma in Manufacturing Engineering (BTEC)	Mode D
Level 3 Diploma in Manufacturing Engineering (VRQ)	Mode D
Level 3 Diploma in Electrical/Electronic Engineering (BTEC)	Mode D
Level 3 VRQ Certificate in Engineering Technologies (Electronics)	Mode D
HNC Electrical and Electronic Engineering Offered with University of South Wales	Mode D

D: Day / E: Evening



Find out
more about
the course:

ESOL - ENGLISH FOR SPEAKERS OF OTHER LANGUAGES

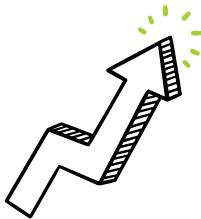
ESOL is for anyone who wants to improve their use and understanding of English for work, social, study or to improve life in the UK. You can gain a valuable qualification from Pre-Entry to Level 2 in: Speaking; Listening; Reading; Writing.

You can study in the day or evening and classes are offered in Aberdare, Nantgarw and Ystrad Mynach campuses. If you wish to study ESOL in the Rhondda area, please contact us – classes will be provided if there is enough demand.

To arrange an ESOL assessment call us on 07816 334660.
For more information, visit our website www.cymoedd.ac.uk/esol



Find out
more about
the course:



GCSEs

ABERDARE / NANTGARW / RHONDDA / YSTRAD MYNACH

GCSE English	Mode D & E
GCSE Mathematics	Mode D & E
GCSE Numeracy	Mode D & E

D: Day / E: Evening



FIRST AID & SAFETY

SHORT COURSES

**ABERDARE / NANTGARW /
RHONDDA / YSTRAD MYNACH**

Qualsafe Level 2 Award in Safe Moving and Handling	Mode D & E
Qualsafe Level 2 Award in Emergency First Aid	Mode D & E
Qualsafe Level 3 Award in First Aid at Work (3 consecutive weeks)	Mode D & E
Qualsafe Level 3 Award First Aid at Work Refresher	Mode D & E
Qualsafe AED Training	Mode D & E
Qualsafe Level 2 Fire Safety	Mode D & E

D: Day / E: Evening

A full list of our short courses can be found on our website:
www.cymoedd.ac.uk/en/employers/training-courses/
For further information, a brochure or to book a course
please contact the BIS Team on 01443 663128 or
bis@cymoedd.ac.uk



**Find out
more about
the course:**

HAIRDRESSING & BEAUTY THERAPY

ABERDARE / NANTGARW / YSTRAD MYNACH

Level 2 Certificate in Barbering	Mode E
----------------------------------	--------

NANTGARW

Level 2 Certificate in Hairdressing	Mode E
Level 2 Diploma in Hairdressing	Mode E
Level 3 Certificate in Barbering	Mode E
Level 2 Award in Manicure	Mode E
Level 3 Nail Enhancement Using Liquid & Powder (Acrylic)	Mode E
Level 3 Swedish Massage	Mode E
Level 3 Aromatherapy	Mode E
Level 3 Reflexology	Mode E
Level 3 Indian Head Massage	Mode E

D: Day / E: Evening



Find out
more about
the course:



SPORT

YSTRAD MYNACH

Level 2 Certificate in Gym Instructing	Mode E
Level 3 Diploma in Personal Training	Mode D

NANTGARW

Level 2 Certificate in Gym Instructing	Mode E
--	--------

SHORT COURSES

YSTRAD MYNACH / NANTGARW

Level 2 Award in Instructing Circuit Sessions	Mode D
Level 2 Award in Instructing Kettle Bells	Mode D

D: Day / E: Evening

A full list of our short courses can be found on our website: www.cymoedd.ac.uk/en/employers/training-courses/

For further information, a brochure or to book a course please contact the BIS Team on 01443 663128 or bis@cymoedd.ac.uk



Find out more about the course:

SIGN LANGUAGE / DEAF AWARENESS

SHORT COURSES

YSTRAD MYNACH

Level 1 British Sign Language

Mode D & E

Level 2 British Sign Language

Mode E

Deaf Awareness Workshop

Mode D & E

Level 1 Deaf Awareness

Mode D & E

D: Day / E: Evening



A full list of our short courses can be found on our website:
www.cymoedd.ac.uk/en/employers/training-courses/

For further information, a brochure or to book a course
please contact the BIS Team on 01443 663128 or
bis@cymoedd.ac.uk



**Find out
more about
the course:**

AIR CABIN

YSTRAD MYNACH

Introduction to Cabin Crew

Mode E

D: Day / E: Evening



Find out more about the course:



VOCATIONAL ACCESS

NANTGARW

Computer Courses for people with a Visual Impairment

Mode D

YSTRAD MYNACH

Skills for Independence & Work

Mode D

D: Day / E: Evening



Find out more about the course:



WELSH FOR ADULTS - GLAMORGAN CENTRE



Your one stop shop for everything you need to know about learning Welsh. Courses held at communities throughout Rhondda Cynon Taff, Bridgend and Merthyr Tydfil - daytime, evening and weekends. All levels - from complete beginners to fluent speakers.

We'd love to hear from you!



I Oedolion
For Adults



Llywodraeth Cymru
Welsh Government

University of
South Wales
Prifysgol
De Cymru

Ffôn/Phone : 01443 483600
E-bost/E-mail : learnwelsh@southwales.ac.uk
Gwefan/Website : www.southwales.ac.uk/learnwelsh



CONFERENCING & EVENTS

Coleg y Cymoedd exhibits a variety of conference rooms, auditoria and specialist facilities available across our four campuses: Nantgarw, Rhondda, Aberdare and Ystrad Mynach.

Through our Conferencing and Events facilities, we are able to support you, your business and the wider community needs in hosting conferences, events, or training courses. With up-to-date facilities, fully equipped with smartboards and Wi-Fi access, ample free car parking, all four of our locations are easily accessible via all major transport links.

Our team is committed to providing a first-class service in ensuring your event runs smoothly, with exceptional quality, support and value for money when commissioned to help make your event a complete success.

Our clients have access to the latest technologies including video conferencing (Teams/Zoom), Wi-Fi and interactive smartboards.

In addition, we have the ability to support your conference or event with our on-site reprographics service for printed materials. We provide a full catering service that ranges from private dining, through to light refreshments and freshly prepared buffets to suit all tastes. We also have fully licenced bar facilities at all four of our campuses.



**Find out
more:**

A sure way to appreciate our quality of service and facilities is to experience them for yourself – please arrange a welcome visit to view our great facilities. For further information please contact our dedicated Events Coordination team on 01443 663213 / 01443 663024 or email Alison.Parry@cymoedd.ac.uk

BUSINESS & INTERNATIONAL SERVICES

Focus on what you do best...
We'll do the rest!

Business Services at Coleg y Cymoedd provides essential training and development opportunities for individuals and organisations, with outstanding success rates.

With a dedicated team of Employer Engagement Officers, we are able to offer a full consultation and support your training needs.

Our courses range from essential 1-day courses to 1-year+ professional development programmes, with a variety of delivery methods including face-to-face, online and self-led training programmes. Many of our courses can also be accessed through various funding streams. For eligibility criteria, please visit our website.

A full list of our BIS courses can be found on our website: www.cymoedd.ac.uk/employers/workforce-training-development/

For further information, a brochure or to book a course please contact the BIS Team on 01443 663128 or bis@cymoedd.ac.uk



**Find out
more:**

Aberdare

01685 887500

enquiries@cymoedd.ac.uk

Nantgarw

01443 662800

enquiries@cymoedd.ac.uk

Rhondda

01443 663202

enquiries@cymoedd.ac.uk

Ystrad Mynach

01443 816888

enquiries@cymoedd.ac.uk



facebook.com/ColegyCymoedd
@colegycymoedd



**“I would 100%
recommend Coleg y
Cymoedd to anyone,
this place changed my
life for the better and
that was down to the
course, individuals and
expertise provided.”**

Arfon Carhart,
Former Cymoedd apprentice

